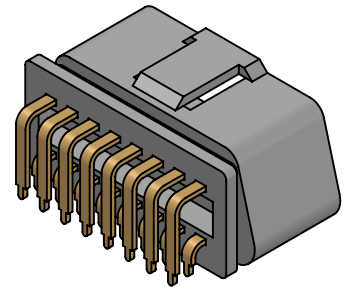
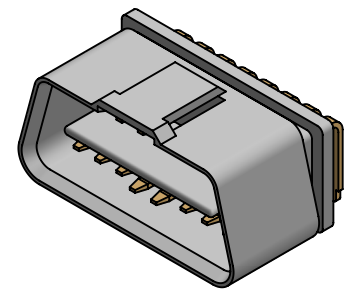
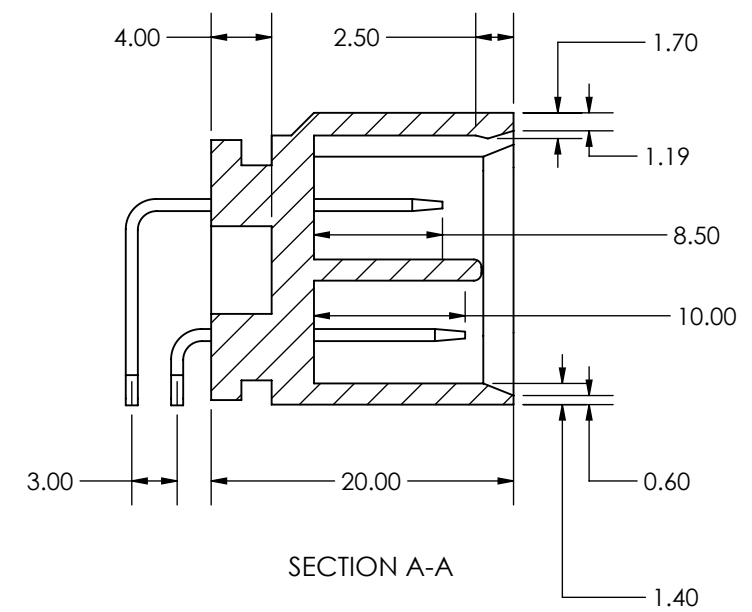
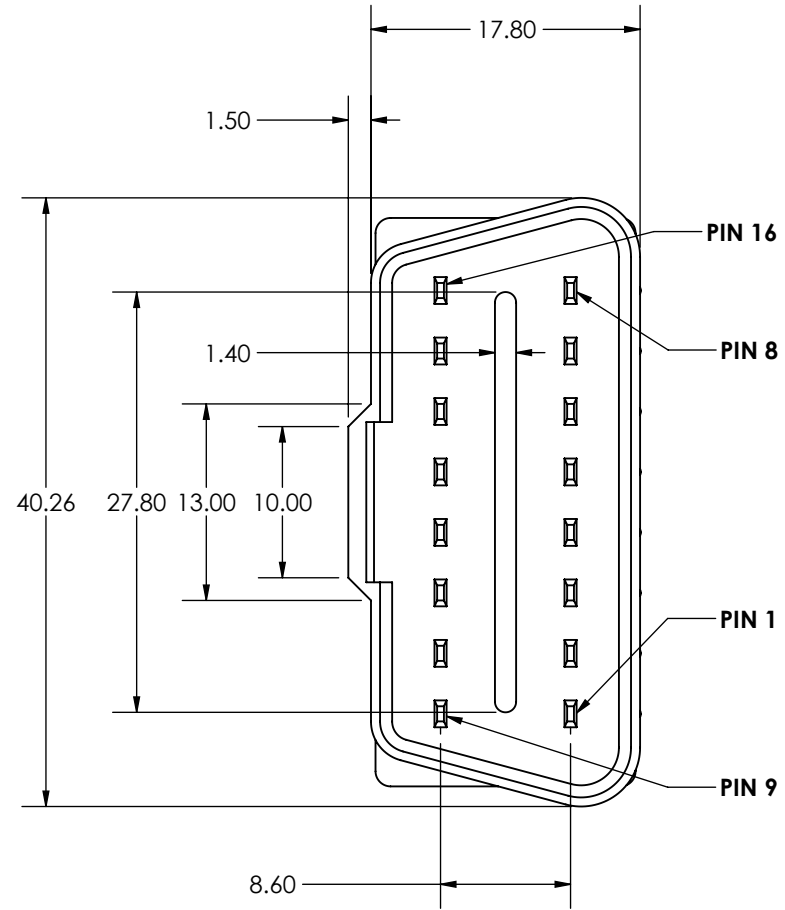
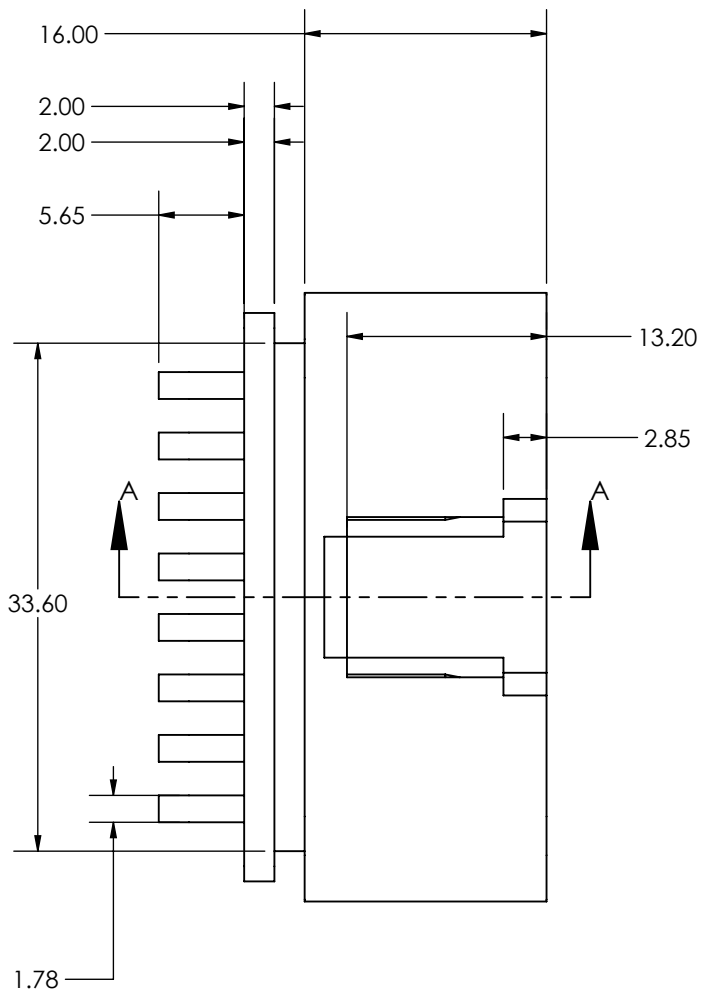
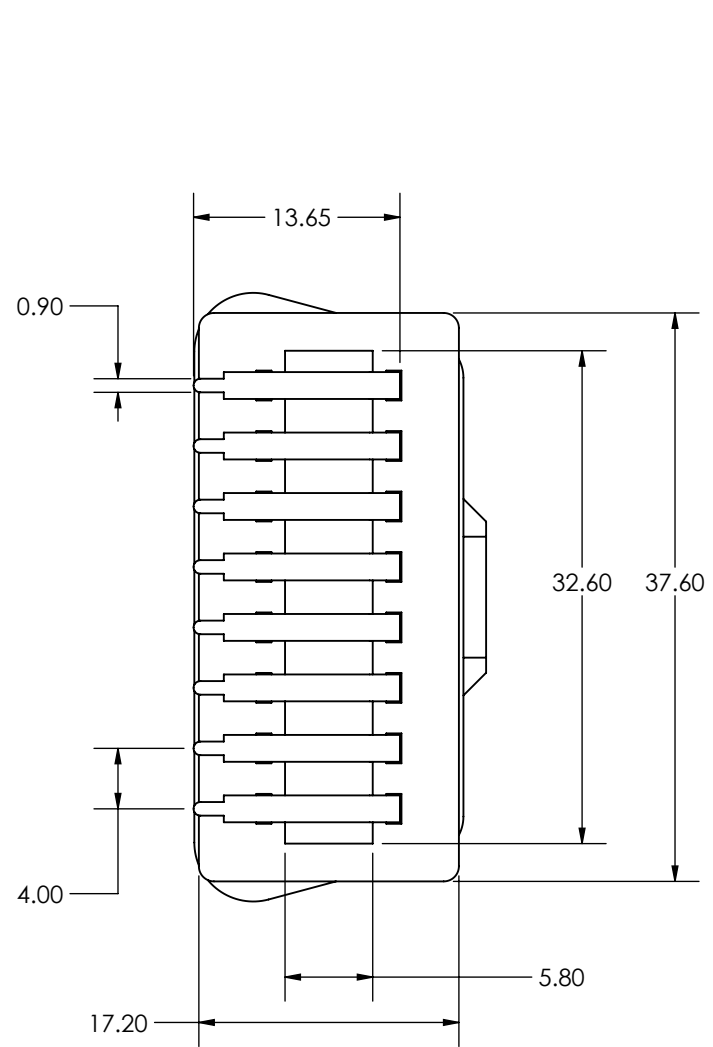

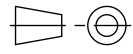


| REVISIONS | |
|-----------|----------------------------|
| REV. | DESCRIPTION |
| A | INITIAL RELEASE - 6/1/2020 |



- Electrical:
1. Dielectric Strength: 1000V AC/1 minute
 2. Contact Resistance: 100mOhm MAX
 3. Insulation Resistance: 500VDC, 100MOhm Min
 4. Rated Voltage: 30V MAX
 5. Rated Current: 5 Amps
 6. Ambient Temperature Range: -40C to +85C

- Mechanical:
1. Housing material: PA66 plus fiber 15%, Color: Black
 2. Pin 4 and 5 are longer than other pins.
 3. Terminals - Brass, Gold plating 1µm

| | | |
|---|---|---|
| PROPRIETARY AND CONFIDENTIAL THIS DRAWING OR MATERIAL IS SUBMITTED TO YOU WITH CONFIDENCE THAT IT WILL BE USED ONLY FOR YOUR INFORMATION ON APPLICATION ENGINEERING STUDIES AND SHALL NEVER BE USED IN ANY MANNER DETRIMENTAL TO OUR INTEREST. | DIMENSIONS ARE IN MILLIMETERS UNLESS NOTED. TOLERANCES: ANGULAR: $\pm 1^\circ$ X ± 1 X.X ± 0.3 X.XX ± 0.10 |  MACCHINA LLC P.O. BOX 18701 MINNEAPOLIS, MN 55418 www.macchina.cc |
| | | |
| THIRD ANGLE PROJECTION  | MATERIAL: | SIZE DWG. NO. |
| DO NOT SCALE DRAWING | FINISH: | B CCBDM20 |
| DESIGNER: | DRAWING DATE: | REV. A |
| SCALE: 2:1 | WEIGHT: | SHEET 1 OF 1 |